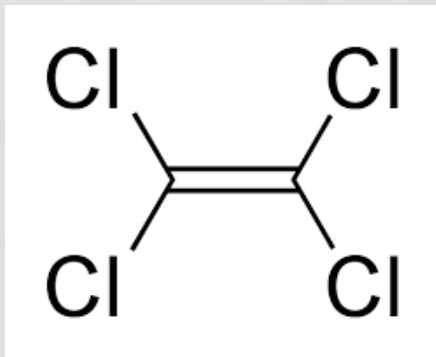
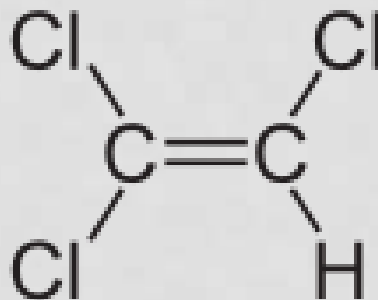


TETRACHLORETHYLENE (PERC) & TRICHLOROETHYLENE (TCE)

Contaminated Groundwater
Highly volatile



Tetrachlorethylene (perc)



Trichlorethylene (TCE)



Vapor Intrusion Pathway

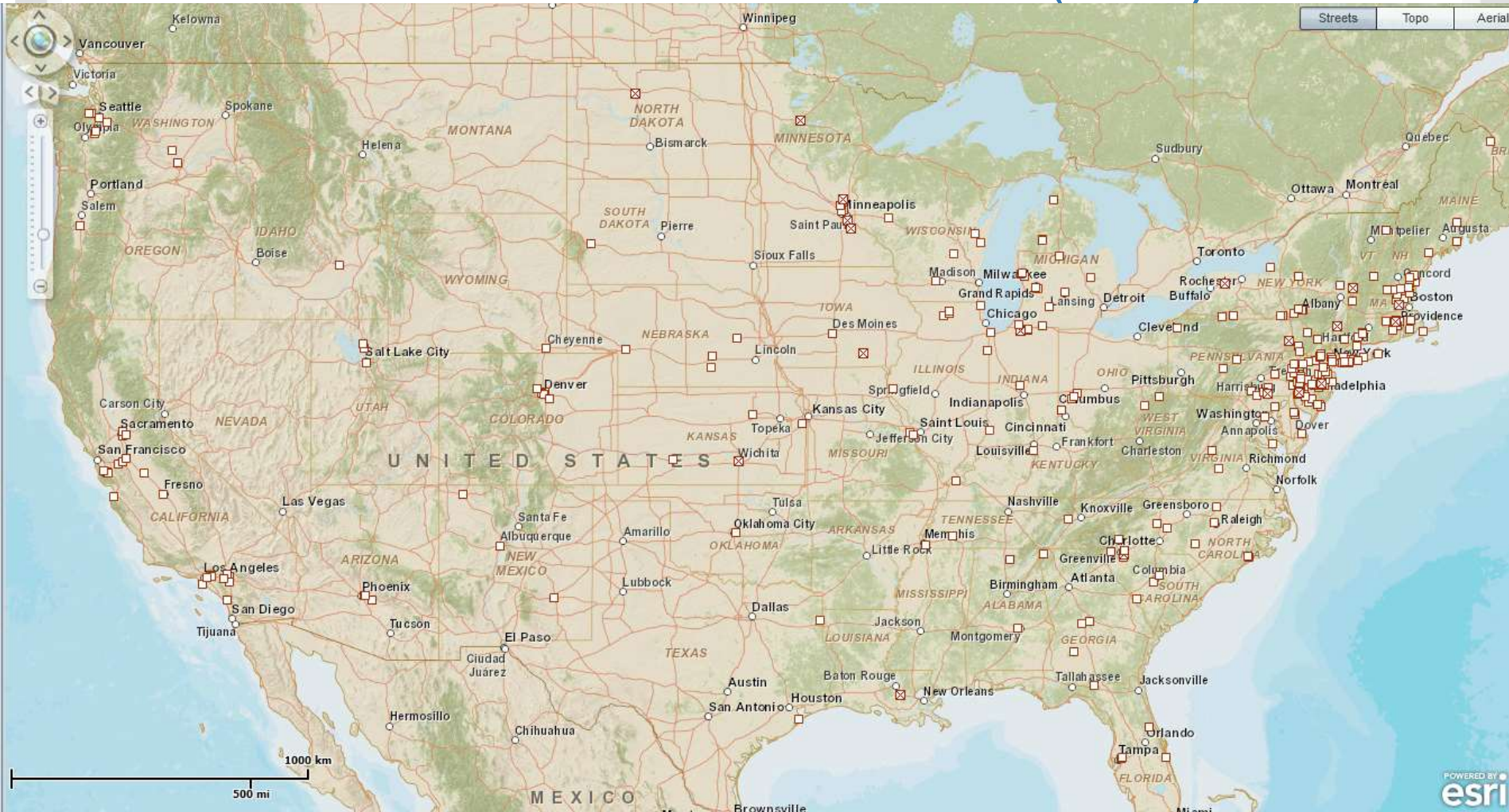
SUPERFUND SITES

TRICHLORETHYLENE (TCE)



<http://toxmap.nlm.nih.gov/toxmap/flex/>

SUPERFUND SITES TETRACHLORETHYLENE (PCE)



<http://toxmap.nlm.nih.gov/toxmap/flex/>

KNOWN AND POSSIBLE HEALTH EFFECTS

HUMAN & ANIMAL DATA

Tetrachlorethylene (Perc)

- Effects in the kidney, liver, nervous, immune & hematologic systems, and on development and reproduction.
- Several types of cancer including bladder cancer, non-Hodgkin lymphoma, multiple myeloma.
- EPA: likely to be carcinogenic to humans.

Trichlorethylene (TCE)

- Effects in the liver, kidneys, immune system, central nervous system.
- Congenital cardiac defects in the developing fetus from both acute and chronic exposure
- EPA: TCE is carcinogenic

Sources: EPA (IRIS), IARC & ATSDR

<http://www.atsdr.cdc.gov/substances/toxsubstance.asp?toxid=30>